

## Description

A lightweight reinforced LDPE film with good light transmission and flexibility.

The woven polyethylene reinforcement provides good resistance to tears and punctures.

## Applications

The BUILD FILM standard is often used as a vapour barrier within roof and wall constructions.

Also used to temporarily cover openings in the building during construction or as a dust wall.

## Programme

Size(s) 1,5 x 100 m, 2 x 100 m and 3 x 50m

Colour(s) transparent

Packing roll, 3m 1x folded, core diameter 50mm, 53 rolls per pallet

## Material

Raw material HDPE tape fabric leno, LDPE coating

Yarn MD/CD folded tape 750 D (2x) / 750 D

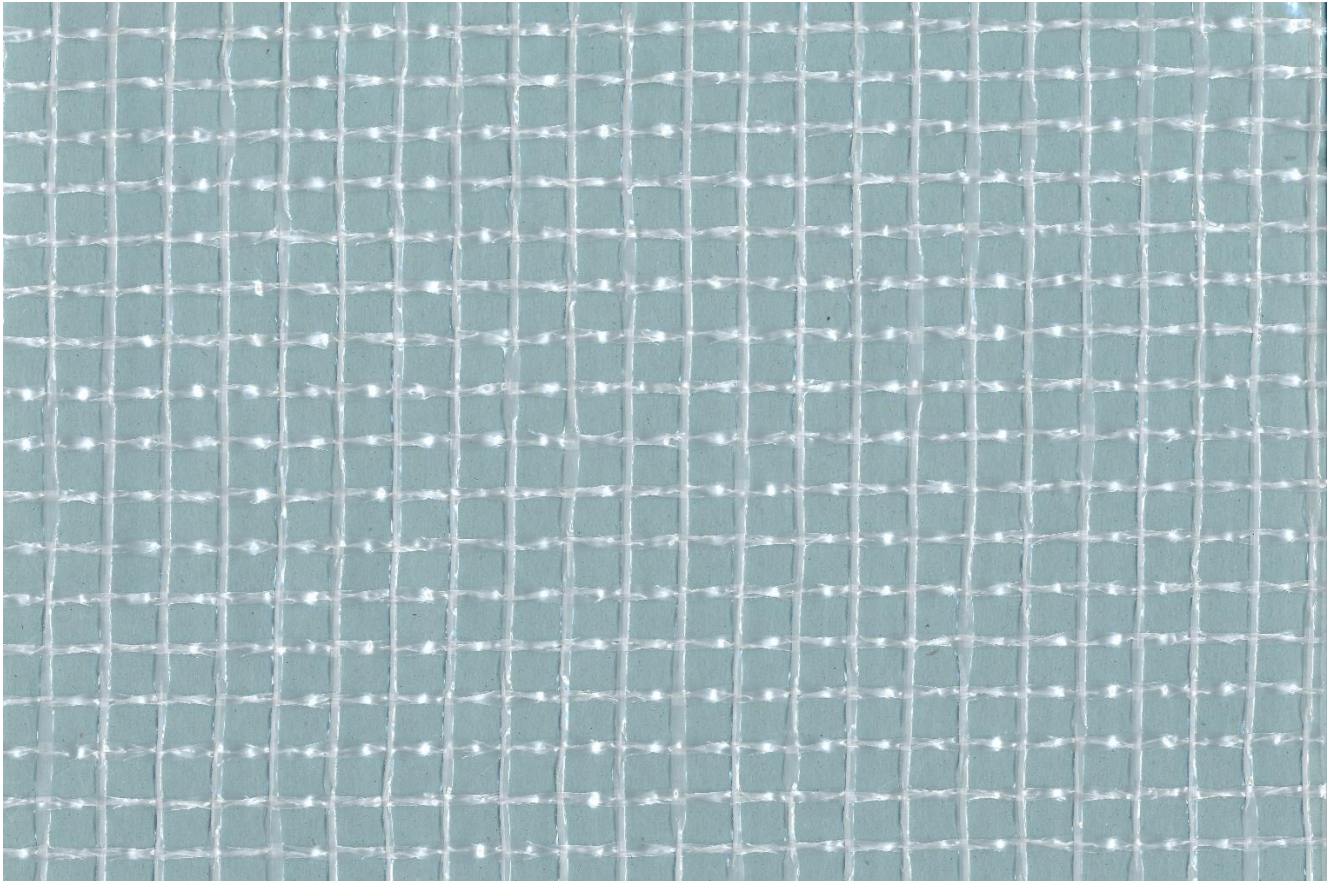
Construction MD/CD 3 inch<sup>2</sup>

Properties	Test method	Value	Unit
Fabric weight	ISO 1183-1	85	g/m <sup>2</sup>
Tensile strength MD/CD	ISO 1421-1	375 / 185	N/5cm
Elongation MD/CD	ISO 1421-1	19	%
Temperature resistance		-40 / +80	C°
Light transmission		81	%

*All data are average values only to be used for reference*

BUILD FILM standard

**Product Sheet**



**Transparent**